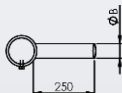
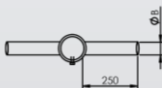


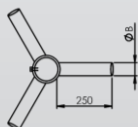
SUORTES PARA POSTE



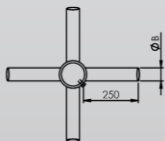
Suporte Simples			Encaixe luminária
Modelo	Ø Topo do Poste	Ø Tubo	ØB
FLSU 1-69	60.3	69.85	48 ou 60
FLSU 1-88	76.2	88.9	48 ou 60
FLSU 1-101	88.9	101.6	48 ou 60
FLSU 1-114	101.6	114.3	48 ou 60
FLSU 1-127	114.3	127.0	48 ou 60



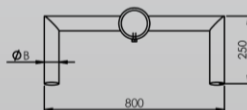
Suporte Duplo			Encaixe luminária
Modelo	Ø Topo do Poste	Ø Tubo	ØB
FLSU 2-69	60.3	69.85	48 ou 60
FLSU 2-88	76.2	88.9	48 ou 60
FLSU 2-101	88.9	101.6	48 ou 60
FLSU 2-114	101.6	114.3	48 ou 60
FLSU 2-127	114.3	127.0	48 ou 60



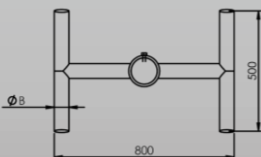
Suporte Triplo			Encaixe luminária
Modelo	Ø Topo do Poste	Ø Tubo	ØB
FLSU 3-69	60.3	69.85	48 ou 60
FLSU 3-88	76.2	88.9	48 ou 60
FLSU 3-101	88.9	101.6	48 ou 60
FLSU 3-114	101.6	114.3	48 ou 60
FLSU 3-127	114.3	127.0	48 ou 60



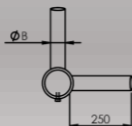
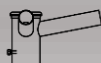
Suporte Quadruplo			Encaixe luminária
Modelo	Ø Topo do Poste	Ø Tubo	ØB
FLSU 4-69	60.3	69.85	48 ou 60
FLSU 4-88	76.2	88.9	48 ou 60
FLSU 4-101	88.9	101.6	48 ou 60
FLSU 4-114	101.6	114.3	48 ou 60
FLSU 4-127	114.3	127.0	48 ou 60



Suporte Duplo Paralelo			Encaixe luminária
Modelo	Ø Topo do Poste	Ø Tubo	ØB
FLSU 2P-60	60.3	69.85	48 ou 60
FLSU 2P-76	76.2	88.9	48 ou 60
FLSU 2P-88	88.9	101.6	48 ou 60
FLSU 2P-101	101.6	114.3	48 ou 60
FLSU 2P-114	114.3	127.0	48 ou 60



Suporte Quadruplo "H"			Encaixe luminária
Modelo	Ø Topo do Poste	Ø Tubo	ØB
FLSU 4H-60	60.3	69.85	48 ou 60
FLSU 4H-76	76.2	88.9	48 ou 60
FLSU 4H-88	88.9	101.6	48 ou 60
FLSU 4H-101	101.6	114.3	48 ou 60
FLSU 4H-114	114.3	127.0	48 ou 60



Suporte Duplo "V"			Encaixe luminária
Modelo	Ø Topo do Poste	Ø Tubo	ØB
FLSU 2V-60	60.3	69.85	48 ou 60
FLSU 2V-76	76.2	88.9	48 ou 60
FLSU 2V-88	88.9	101.6	48 ou 60
FLSU 2V-101	101.6	114.3	48 ou 60
FLSU 2V-114	114.3	127.0	48 ou 60